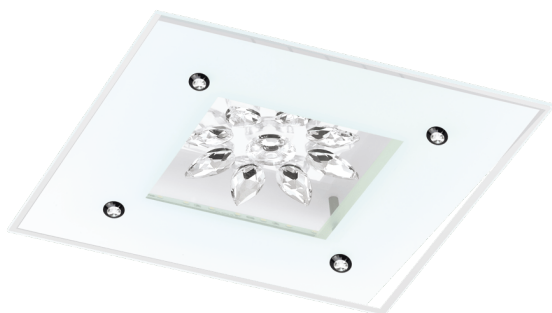


96536

BENALUA 1



General Information

Material number	96536
Type	wall/ceiling light
Product segment	Indoor
Theme	sonstige / nicht zuordenbar
Energy efficiency class (EEI)	F

Dimensions

Article Height (in mm/in)	75
Article Width (in mm/in)	370
Article Length (in mm/in)	370
Net Weight (in kg)	3.73

Material & Colour

Enclosure Material	steel
Enclosure Colour	white
Glass/Shade Material	satin glass, mirror, brilliant
Glass/Shade Colour	white, clear

Functionality

Switch Type	without switch
-------------	----------------

Function	LED not replaceable
Battery	No

Technical Information

Protection Degree	IP20
Protection Class	2
Mains Voltage	220-240V,50/60Hz
Dimmable	Yes
Watt 1	18
Max.Watt incl.transformer/driver	21W
dimnable	Yes
Voltage	220-240V 50/60Hz
U out	17-29V
I out	700mA
Hz	100Hz

Illuminant 1

Number of Lamp socket / Light source 1	1
Lamp socket 1	LED
Illuminant type 1	LED
Illuminant 1	Inclusive
Lumen each Lamp socket / Light source 1	2000
Kelvin 1	3000
Light colour 1	WARM WHITE
Energy efficiency class (EEL)	F
Dimmable	Yes

Compatible Dimmers

NR.02: 434 - PEHA
NR.04: 0300 00 - GIRA
NR.07: 2262 00 - GIRA
NR.09: 852,095 - OPUS
NR.10: 286710 - BERKER
NR.11: 5TC8 284 - SIEMENS
NR.12: 2247 U - BUSCH-JAEGER
NR.13: 6519 U - BUSCH-JAEGER
NR.14: 6513 U-102 - BUSCH-JAEGER
NR.15: 577199 - MERTEN

NR.16: 0307 00 - GIRA

NR.17: 433 HAB - PEHA

NR.18: 225 TDE - JUNG

NR.19: 7759 03 ADW-ETL4 - LEGRAND

Nr.20: 6523 U - BUSCH-JAEGER

Nr.21: 32E450UDM - CLIPSAL

Nr.22: Cat 400T - LEGRAND

Nr.23: 6591 U-101 - BUSCH-JAEGER

Nr.24: 6524 U - BUSCH-JAEGER

Nr.26: 315GLE - ELKO

Nr.27: H-GDM250 - HAMILTON

Nr.30: 852,096 - OPUS

Nr.31: 5TC8211-0 - SIEMENS

Nr.32: System 2000 2385 00 - GIRA



1 x 18 W 1 x 2000

lm

Technical changes reserved

3/3



Contact | Support
eglo.com/en/eglo-worldwide